

G1005

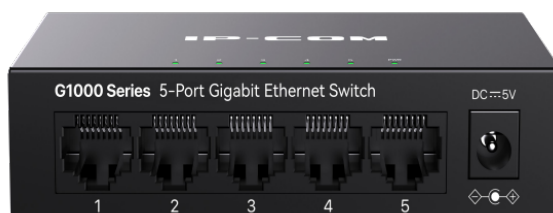
5-Port Gigabit Ethernet Switch

G1005

5-Port Gigabit Ethernet Switch

Products Description

G1005 is a green energy-conservation layer2 switch . It is specially designed to build a fast, convenient and easy-maintained wired access network. G1005 apply with the world' leading chipset vendor solution, which brings a strong switch performance. The all-steel-shell body improves the heat dissipation and ensures the stability. Professional port lightning-proof enables to reduce the damage of severe weather. It supports full wire-speed non-blocking forwarding and port auto-flip. With high enterprise-level art, it is the ideal solution to build your gigabit wired access network (SMBs, hotels, Video Surveillance).



- 5 10/100/1000Mbps RJ45 ports
- Desktop and wall-mount
- Plug and play, Without configuration

Key Feature

- Compliant with IEEE802.3, IEEE802.3u, IEEE802.3x, IEEE802.3ab
- Store & forward, share memory, non-blocking architecture
- Supports MAC address self-learning and auto MDI/MDIX
- Provide 5*10/100/1000Mbps auto-negotiation ports
- Supports full-duplex 802.3x flow control and half-duplex backpressure flow control
- Supports 2K MAC address list, MAC address learning and auto-ageing
- Supports port Inductive Lightning Protection up to 6KV
- Fanless design
- Desktop and wall-mount Design
- Plug and play, no need configuration

Product Features



Full wire-speed

Provide 5 10/100/1000M auto-negotiation RJ45 ports. All ports have the the wire-speed forwarding capability and support IEEE 802.3x full-duplex flow control and half-duplex backpressure flow control.



Excellent Lightning-Proof design

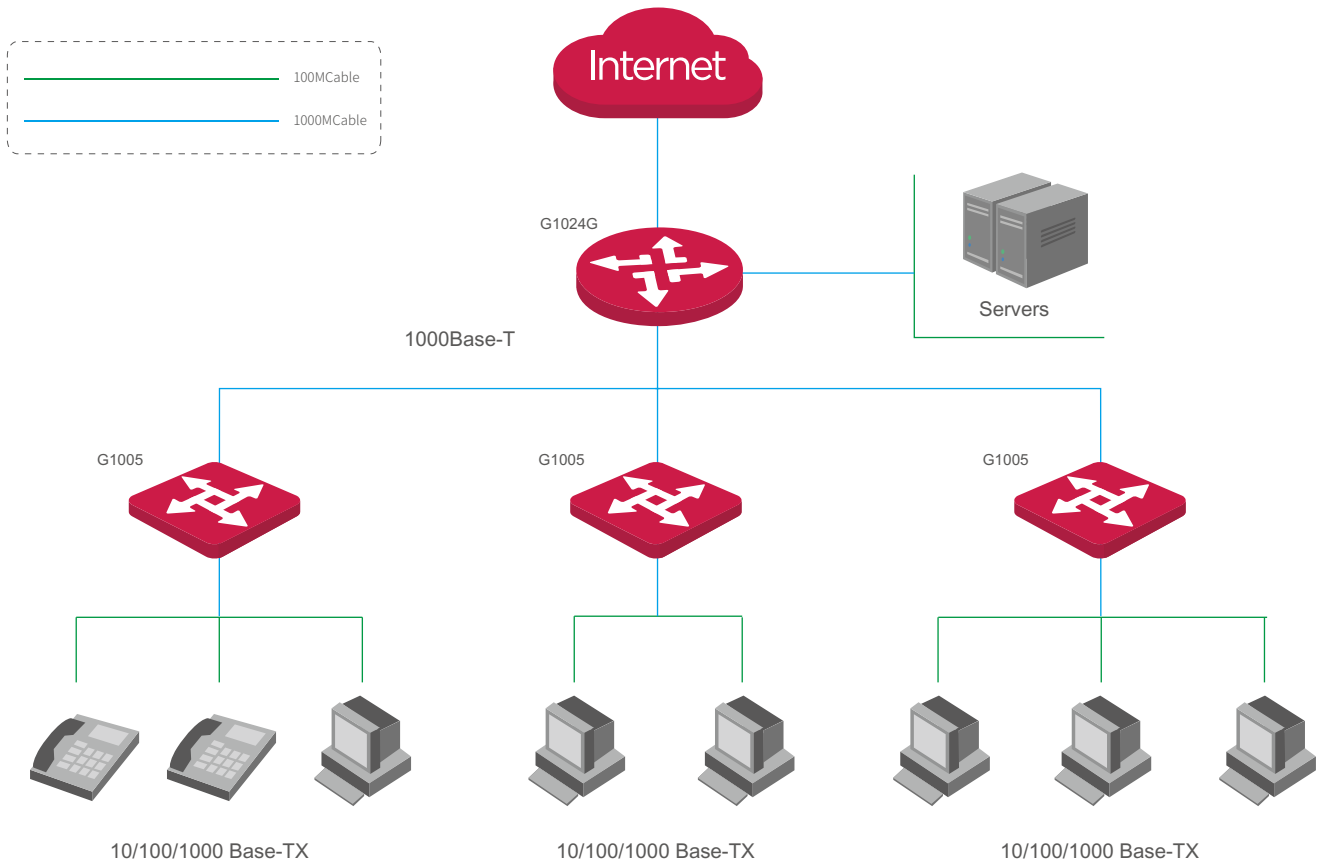
Integrated professional lightning-proof circuit which supports port lightning-proof (common mode protection 6KV). Effectively reduce the damage to the network system caused by the thundery weather.



Easy to use

Plug-and-play, which helps you quickly build Gigabit wired network and greatly simplify the management and maintenance of equipment. Supports desktop and wall-mount, easy to install.

Application Scenarios



ProductModel	G1005
HardwareFeatures	
Standards&Protocols	IEEE802.3 IEEE802.3u、IEEE802.3ab、IEEE802.3x
MTBF	≥100,000hours
LED	5*Link/Ack,1*Power
Interface	5*10/100/1000MJ45ports(AutoMDI/MDIX)
TransferMethod	Store-and-Forward
SwitchingCapacity	10Gbit/s
PacketForwardingRate	7.44Mpps
AddressTable	2KMAC
Power	DC:5V600mA
Dimensior(L×W×H)	100mmx64mmx25mm
PowerConsumption	<2.5W
L2 Features	IGMP Snooping V1/V2/V3
Environment	OperatingTemperature: 0°C~40°C StorageTemperature: -40°C~70°C OperatingHumidity: 10%~90%non-condensing StorageHumidity: 5%~90%non-condensing
LightningProof	RJ45Ports>6KV
Certification	FCC、CE、RoHS



Headquarters

IP-COM Networks Co.,Ltd.

Tel: +86 755-27653089

Fax: +86 755-27657178

Email: marketing@ip-com.com.cn

Website: www.ip-com.com.cn

ADD: Tower E3, No1001, Zhongshanyuan Road, Nanshan District, Shenzhen, China.

Copyright© 2016 IP-COM Networks Co., Ltd. All Rights Reserved.

