

# **Pro-7-LR**

BE5010 Dual-Band WiFi7 Ceiling Access Point

# Pro-7-LR

## BE5010 Dual-Band WiFi7 Ceiling Access Point

---

### Product Introduction

Pro-7-LR is a dual-band Wi-Fi7 Ceiling Access Point that can work in both 2.4 GHz and 5 GHz bands, with a wireless access rate of up to 5010Mbps. Adopt of Wi-Fi7's unique MLO technology and 2.5Gbps Ethernet port, the wired transmission rate is greatly improved to meet the needs of multi-device interconnection. It support to be managed by IPCOM ProFi APP and cloud platform, You can manage the devices remotely in any location.

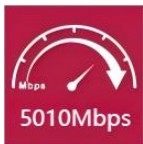


## Key

## Features

- BE5010 dual-band Wi-Fi 7
- 802.11k/v/r Roaming
- IPCOM ProFi Cloud Management
- Power input with 802.3at PoE
- 2.5G Ethernet uplink port

## Product Feature



### **5010Mbps wireless access speed**

Both 2.4GHz and 5GHz dual-bands support the new Wi-Fi 7 standard, with a Wi-Fi concurrent rate of up to 5010Mbps, 1.7 times that of the last-generation of AP (AX3000).



### **Wireless automatic tuning, optimizing the overall performance of wireless networks**

When the working channels of adjacent APs have overlapping frequency bands, excessive power of one AP can cause signal interference to adjacent APs. Through the wireless optimization function of IP-COM AC controller/router, the channel and power of APs can be automatically planned, intelligently reducing signal interference between APs and ensuring high-speed operation of wireless networks.

## Product Feature

---



### **Support 802.11K/V/R fast roaming**

When multiple APs are deployed in an area for coverage, mobile phones/computers/pads and other terminal devices automatically connect to the AP with the best signal quality during the user's movement, and Wi-Fi switching is zero-perception. Whether it is a voice call or a video call, you can move freely without constraints.



### **Supports PoE power supply**

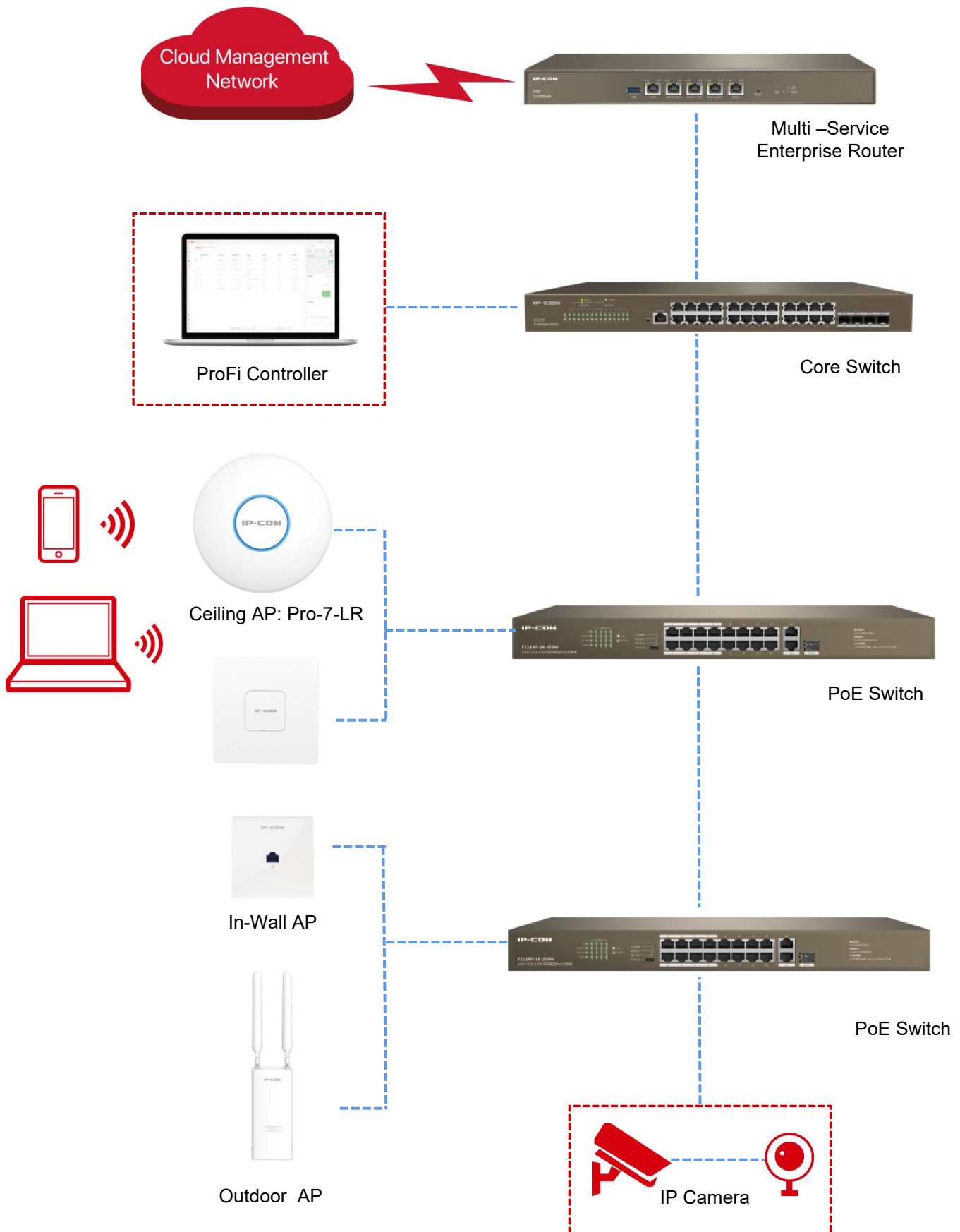
Support 802.3at standard PoE network cable power supply, no external power supply required. One network cable can be connected to the switch to achieve PoE power supply and data transmission, plug and play, no need to consider the location of the socket, power line routing and other issues, convenient wiring, flexible networking, and more convenient construction.



### **Supports cloud platform/APP remote management**

Supports unified deployment, configuration, and management of devices. Through the ProFi cloud platform and ProFi APP, remote monitoring, management, and maintenance can be performed anytime and anywhere. It supports automatic generation of real topology and wireless one-click optimization. You don't need to be on site to easily grasp the overall situation.

## Application Scenarios



# Specifications

Product Information	
Model	Pro-7-LR
Category	Ceiling
Dimension	Φ250.6*55 mm
Hardware Specifications	
Interface	1*100/1000/2500Mbps Ethernet Port (PoE) 1*10/100/1000Mbps Ethernet Port
Button	1*Reset
LED indicator	1*SYS
Maximum Power Consumption	17.4W
Power Supply	PoE 802.3at
Max. Number of Clients	256
Recommended Clients	100
Antenna	2*4dBi + 3*4dBi
2.4GHz maximum power	<ul style="list-style-type: none"> <li>• CE: &lt;20 dBm (2.4 GHz, EIRP)</li> <li>• FCC: &lt;25 dBm (2.4 GHz)</li> </ul>
5GHz maximum power	<ul style="list-style-type: none"> <li>• CE: &lt;23 dBm(5 GHz, EIRP)</li> <li>• FCC: &lt;25 dBm(5 GHz)</li> </ul>
Reception Sensitivity	2.4GHz: 11be EHT20 MCS13: -62dBm 11be EHT40 MCS13: -60dBm 5GHz: 11be EHT20 MCS13:-62dBm 11be EHT40 MCS13:-60dBm 11be EHT80 MCS13:-58dBm 11be EHT160 MCS13:-56dBm
Frequency Range	2.4GHz&5GHz
Standard & Protocol	IEEE 802.11b/g/n/ac/ax/be
Maximum wireless speed	2.4GHz: 688Mbps 5GHz: 4323Mbps
Bandwidth	20MHz/40MHz/80MHz/160MHz

# Specifications

Software Specifications	
Operating Mode	AP/Client+AP
Max. No. of SSID	2.4GHz: 8    5GHz: 4
Hide SSID	Supported
OFDMA	Supported
Beamforming	Supported
Fast roaming (802.11k/v/r)	Supported
MLO	Supported
WPA-PSK	Supported
WPA2-PSK	Supported
WPA	Supported
WPA2	Supported
WPA3-SAE	Supported
Access control	Supported
Adjustable power transmit	Supported
Automatic channel	Supported
AP isolation	Supported
Guest network	Supported
Connected clients control	Supported
RSSI Threshold	Supported
Weak signal terminal elimination	Supported
Prioritize 5 GHz	Supported
VLAN tagging for SSID	Supported
LED control	Supported
MU-MIMO	Supported
Diagnostics tool	Supported
Reboot at specified interval	Supported
Scheduled reboot	Supported
Device management	Web, Router, ProFi APP, AP Controller

# Specifications

## Software Specifications

System logs	Supported
Firmware upgrade	Supported
Reset	Supported
Backup configuration	Supported
Restore configuration	Supported

## Others

Management Address	10.16.16.169 192.168.0.254
Operation Temperature	-10°C ~ 45°C
Operating Humidity	10%~90% non-condensing
Storage Temperature	-30°C ~ 70°C
Storage Humidity	5%~90% non-condensing



[www.ip-com.com.cn](http://www.ip-com.com.cn)



**SHENZHEN IP-COM NETWORKS CO., LTD.**

Room 101, Unit A, First Floor, Tower E3, No.1001, Zhongshanyuan Road, Nanshan District, Shenzhen, China. 518052

Service: [info@ip-com.com.cn](mailto:info@ip-com.com.cn)

Inquiry: [marketing@ip-com.com.cn](mailto:marketing@ip-com.com.cn)

Tel: 86-755-27653089

Specifications are subject to change without notice. Copyright ©2024 SHENZHEN IP-COM NETWORKS CO., LTD. All rights reserved.  
IP-COM is the trademark of SHENZHEN IP-COM NETWORKS CO., LTD. All other brand names mentioned herein are the trademark or registered trademarks of their respective holders.