

# Pro-6-Mini

AX1500 Wi-Fi 6 Dual Band Gigabit Ceiling AP

# Pro-6-Mini

## AX1500 Wi-Fi 6 Dual Band Gigabit Ceiling AP

---

### Product Introduction

Pro-6-Mini is a Gigabit dual-band ceiling AP based on the new Wi-Fi 6 standard, with a wireless rate of up to 1500Mbps; supports fast roaming, which automatically selects a wireless network with better quality; supports one-key wireless network optimization, which simplifies network debugging steps.



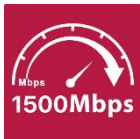
## Key Features

---

- 2.4G/5G dual-band concurrent, wireless rate up to 1500Mbps
- Supports one-click wireless optimization
- Supports remote management
- Supports fast roaming

## Product Feature

---



### **1500M wireless access speed**

Adopting the new generation Wi-Fi 6 technology, with 2.4G/5G concurrency and a wireless speed of up to 1500Mbps, compared to mainstream Wi-Fi 5 AC1200 ceiling mounted APs, the speed has increased by 38%. Simultaneously equipped with multiple wireless technologies such as OFDMA and MU-MIMO, it supports access to more terminal devices and enables multiple terminal devices to access the internet at high speed with lower latency.



### **Wireless automatic tuning, optimizing the overall performance of wireless networks**

When the working channels of adjacent APs have overlapping frequency bands, excessive power of one AP can cause signal interference to adjacent APs. Through the wireless optimization function of IP-COM AC controller/router, the channel and power of APs can be automatically planned, intelligently reducing signal interference between APs and ensuring high-speed operation of wireless networks.

## Product Feature

---



### **Support 802.11K/V/R fast roaming**

When multiple APs are deployed in an area for coverage, mobile phones/computers/pads and other terminal devices automatically connect to the AP with the best signal quality during the user's movement, and Wi-Fi switching is zero-perception. Whether it is a voice call or a video call, you can move freely without constraints.



### **Supports PoE power supply**

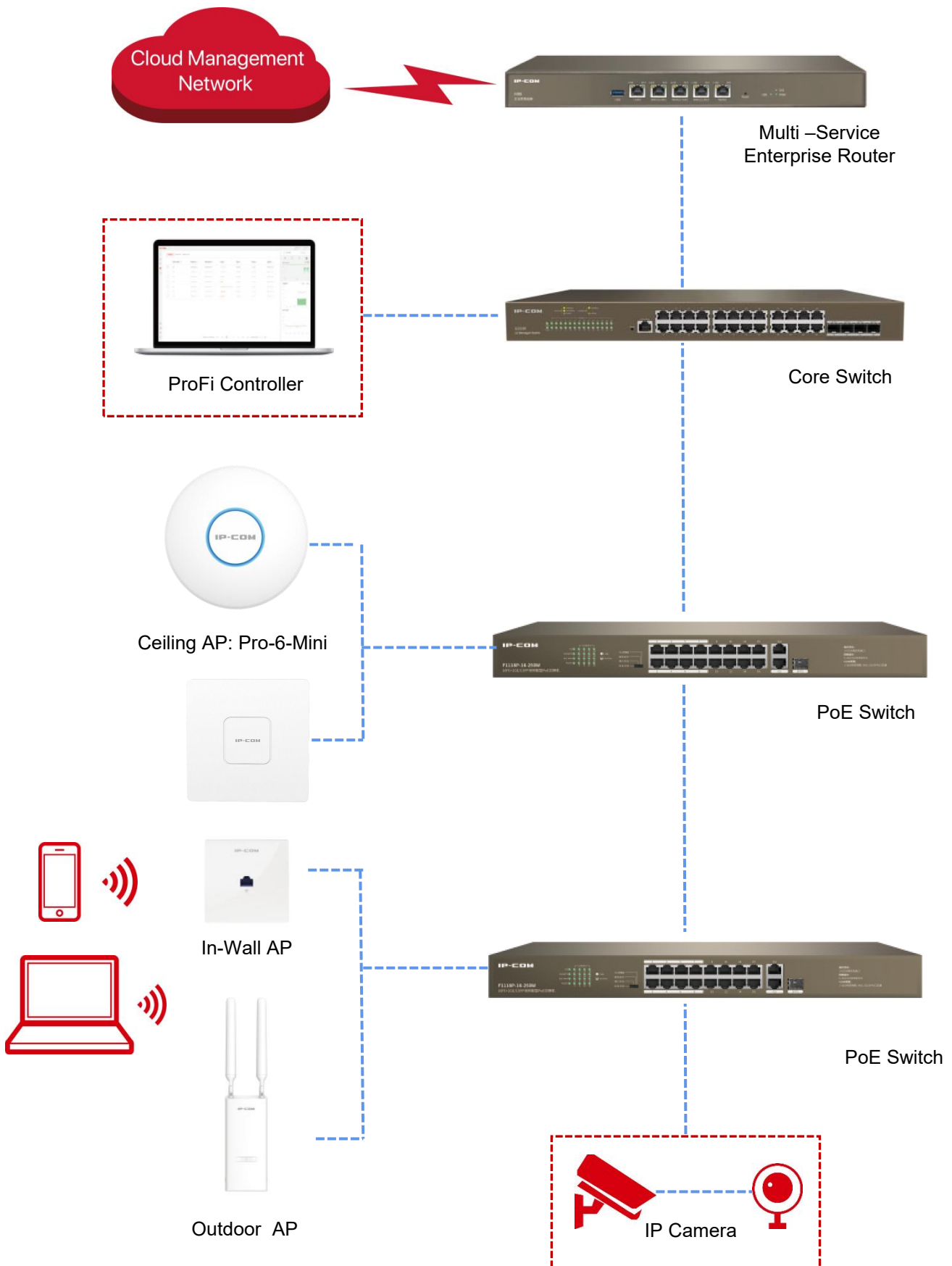
Support 802.3af standard PoE network cable power supply, no external power supply required. One network cable can be connected to the switch to achieve PoE power supply and data transmission, plug and play, no need to consider the location of the socket, power line routing and other issues, convenient wiring, flexible networking, and more convenient construction.



### **Supports cloud platform/APP remote management**

When the working channels of adjacent APs have overlapping frequency bands, excessive power of one AP can cause signal interference to adjacent APs. Through the wireless optimization function of IP-COM AC controller/router, the channel and power of APs can be automatically planned, intelligently reducing signal interference between APs and ensuring high-speed operation of wireless networks.

# Application Scenarios



# Specifications

Product Information	
Model	Pro-6-Mini
Category	Ceiling
Dimension	φ176*43.5mm
Hardware Specifications	
Interface	One 10/100/1000 Mbps Ethernet Port (PoE)
Button	1*Reset
LED indicator	1*SYS
Maximum Power Consumption	10.5W
Power Supply	PoE 802.3af
Max. Number of Clients	256
Recommended Clients	50
Antenna	2*4dBi+2*4dBi
2.4GHz maximum power	11b mode, transmit power 22±1.5dBm
	11g mode, transmit power 22±1.5dBm
	11n mode, MCS7 transmit power 20±1.5dBm
5GHz maximum power	11a mode, transmit power 22±1.5dBm
	11n mode, MCS7 transmit power 19±1.5dBm
	11ac mode, MCS9 transmit power 15±1.5dBm
	11ax mode, MCS11 transmit power 15±1.5dBm
Reception Sensitivity	2.4GHz 802.11b -98dBm
	2.4GHz 802.11n (MCS7) -77dBm
	5GHz 802.11a -95dBm
	5GHz 802.11n (40M-MCS7) -76dBm
	5GHz 802.11ax (80M-MCS11) -64dBm
Frequency Range	2.4GHz&5GHz
Standard & Protocol	IEEE 802.11b/g/n/ac/ax
Maximum wireless speed	2.4GHz: 300Mbps
	5GHz: 1201Mbps
Bandwidth	20MHz/40MHz/80MHz
Software Specifications	
Operating Mode	AP/Client+AP

# Specifications

Software Specifications	
Max. No. of SSID	2.4GHz: 8 5GHz: 4
Hide SSID	Supported
OFDMA	Supported
Beamforming	Supported
Fast roaming (802.11k/v/r)	Supported
WEP	Supported
WPA-PSK	Supported
WPA2-PSK	Supported
WPA	Supported
WPA2	Supported
WPA3-SAE	Supported
Access control	Supported
Adjustable power transmit	Supported
Automatic channel	Supported
AP isolation	Supported
Guest network	Supported
Connected clients control	Supported
RSSI Threshold	Supported
Weak signal terminal elimination	Supported
Prioritize 5 GHz	Supported
VLAN tagging for SSID	Supported
LED control	Supported
MU-MIMO	Supported
Diagnostics tool	Supported
Reboot at specified interval	Supported
Scheduled reboot	Supported
Device management	Web, Router, ProFi APP, AP Controller

# Specifications

## Software Specifications

System logs	Supported
Firmware upgrade	Supported
Reset	Supported
Backup configuration	Supported
Restore configuration	Supported

## Others

Default IP	192.168.0.254
Operation Temperature	-10°C ~ 40°C
Operating Humidity	10%~90% non-condensing
Storage Temperature	-30°C ~ 70°C
Storage Humidity	5%~90% non-condensing



[www.ip-com.com.cn](http://www.ip-com.com.cn)

**IP-COM**  
World Wide Wireless

**SHENZHEN IP-COM NETWORKS CO., LTD.**

Room 101, Unit A, First Floor, Tower E3, No.1001, Zhongshanyuan Road, Nanshan District, Shenzhen, China. 518052

Service: [info@ip-com.com.cn](mailto:info@ip-com.com.cn)

Inquiry: [marketing@ip-com.com.cn](mailto:marketing@ip-com.com.cn)

Tel:86-755-27653089

Specifications are subject to change without notice. Copyright ©2024 SHENZHEN IP-COM NETWORKS CO.,LTD. All rights reserved. IP-COM is the trademark of SHENZHEN IP-COM NETWORKS CO.,LTD. All other brand names mentioned herein are the trademark or registered trademarks of their respective holders.