

**IP-COM**

无线网络解决方案专家

**W39AP**

**AX3000 Dual-Band Gigabit Wi-Fi 6 In-Wall AP**

# W39AP

## AX3000 Dual-Band Gigabit Wi-Fi 6 In-Wall AP

---

### Product Introduction

W39AP is a Gigabit dual-band thin panel AP built based on the new Wi-Fi 6 standard; it supports 160MHz bandwidth and a wireless rate of up to 3000Mbps; it has a five-color replaceable cover to suit different decoration styles; it supports fast roaming and can automatically select a wireless network with better quality; it supports one-click wireless network optimization to simplify network debugging steps.



## Key Features

- Supports five-color cover replacement to suit different decoration styles;
- Supports fast roaming, and the terminal will not freeze or disconnect when moving;
- Supports one-click wireless network optimization and fast network debugging;

## Product Features



### Wi-Fi 6 3000Mbps +160MHz ultra-large bandwidth

Adopting the new generation of Wi-Fi 6 technology, 2.4G/5G dual-band concurrent, the wireless rate is up to 3000Mbps, which is 155% higher than the mainstream Wi-Fi 5 AC1200 panel AP. It also supports MU-MIMO parallel transmission, with ultra-fast Internet speed without waiting, and you can enjoy the ultimate experience of gaming, live broadcasting, and watching TV series.



### Mainstream colors + frosted shading design

Carbon black, classic white, champagne gold, deep space gray, titanium space silver are five mainstream colors, classic and steady, versatile, and can be easily integrated into various decoration styles, suitable for villas/large flats/hotels, etc. The appearance design is simple and generous, with metal frosting technology, the texture is delicate and rich, making the decoration more beautiful.



### 10mm ultra-thin "seamless wall-mounted" design

The new generation of ultra-thin Wi-Fi 6 panel AP protrudes from the wall with a thickness of only 10mm, which is almost flush with ordinary switches and sockets. When installed on the wall, it can be integrated with the wall. It is beautiful and elegant without appearing abrupt, fully interpreting the design concept of "thin in shape and integrated into the wall".



### Seamless roaming throughout the house, no switching during movement

The whole house has a unified WiFi name. When you walk around the house, your Internet device automatically connects to the AP node with the best signal, and the switching delay is as low as 50ms. Whether you are playing games or watching videos, you can move freely between different rooms and play while walking without any lag in games or videos.

## Product Features

---



### 2.4 GHz and 5 GHz concurrency for a higher capacity

With both pure 5 GHz band with less interference and 2.4 GHz band with stronger compatibility and longer transmission distance, the AP allows 2.4 GHz and 5 GHz wireless terminals to access at the same time, ensuring more wireless clients to access. The single AP has more than three times capacity of the traditional single band AP.



### Spectrum navigation (5 GHz priority), an escort for network performance

The AP intelligently enables the wireless clients to connect to 5 GHz wireless network in priority, ensuring load balancing at dual bands and improving the wireless performance.



### Precise RF signal optimization, a guarantee of 2-room WiFi coverage without dead zone

With the independent RFchip, the AP separates the power supply part and WiFi signal processing part, completely avoiding the interference of the power magnetic field on the WiFi signal. Boosted by the high-performance antenna, the AP can cover two side-by-side hotel rooms with full WiFi.



### Support standard PoE power supply

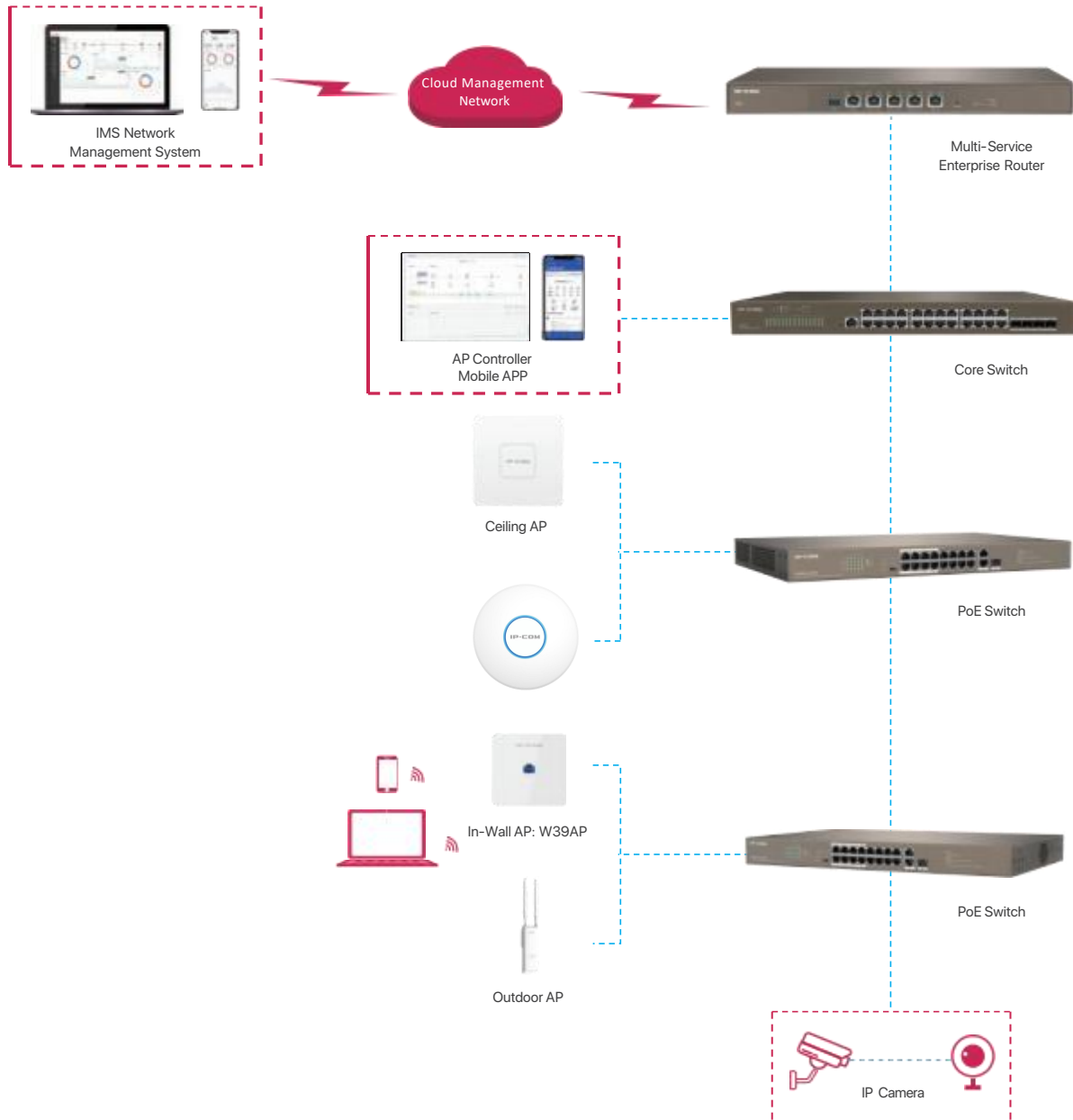
Supports 802.3af standard PoE network cable power supply, no external power supply is required, a network cable connected to the switch can achieve PoE power supply and data transmission, plug and play, no need to consider the socket position, power line routing, the maximum power supply distance can reach 100m, the wiring is neat and beautiful, and the networking is flexible.



### Supporting unified configuration and management

The AP supports the unified management and configuration of IP-COMACs and enterprise routers, enabling the network administrators to manage, configure and monitor all APs conveniently.

# Application Scenarios



## Packaging

Product Information	
Model	W39AP
Category	In-wall
Dimension	86*86*32mm
Hardware Specifications	
Interface	One 10/100/1000 Mbps Ethernet Port One 10/100/1000 Mbps Ethernet Port (PoE)
Button	1*Reset
LED indicator	1*SYS
Maximum Power Consumption	8.5W
Power Supply	PoE 802.3af
Max. Number of Clients	256
Recommended Clients	60
Antenna	4*4dBi
2.4GHz maximum power	11b mode, transmit power 17±1.5dBm 11g mode, transmit power 17±1.5dBm 11n mode, MCS7 transmit power 17±1.5dBm 11ax mode, MCS11 transmit power 17±1.5dBm
5GHz maximum power	11a mode, transmit power 16±1.5dBm 11n mode, MCS7 transmit power 16±1.5dBm 11ac mode, MCS9 transmit power 16±1.5dBm 11ax mode, MCS11 transmit power 16±1.5dBm
Reception Sensitivity	2.4GHz 802.11b -98dBm 2.4GHz 802.11n (MCS7) -73.5dBm 2.4GHz 802.11ax (MCS11) -62.5dBm 5GHz 802.11a -94dBm 5GHz 802.11n (40M-MCS7) -72dBm 5GHz 802.11ax (80M-MCS11) -58dBm
Frequency Range	2.4GHz&5GHz
Maximum wireless speed	2.4GHz: 574Mbps 5GHz: 2402Mbps
Bandwidth	20MHz/40MHz/80MHz/160MHz

Software Specifications	
Operating Mode	AP/Client+AP
Max. No. of SSID	2.4GHz: 8 5GHz: 4
Hide SSID	Supported
OFDMA	Supported
Beamforming	Supported
Fast roaming (802.11k/v/r)	Supported
WEP	Supported
WPA-PSK	Supported
WPA2-PSK	Supported
WPA	Supported
WPA2	Supported
WPA3-SAE	Supported
Access control	Supported
Adjustable power transmit	Supported
Automatic channel	Supported
AP isolation	Supported
Guest network	Supported
Connected clients control	Supported
RSSI Threshold	Supported
Weak signal terminal elimination	Supported
Prioritize 5 GHz	Supported
VLAN tagging for SSID	Supported

<b>Software Specifications</b>	
WiFi Schedule	Supported
LED control	Supported
MU-MIMO	Supported
Diagnostics tool	Supported
Reboot at specified interval	Supported
Scheduled reboot	Supported
Device management	Web management,Router management,ProFi Cloud management
System logs	Supported
Firmware upgrade	Supported
Reboot	Supported
Reset	Supported
Backup configuration	Supported
Restore configuration	Supported
<b>Others</b>	
Default IP	192.168.0.254
Operation Temperature	-10°C ~ 45°C
Operating Humidity	10%~90% non-condensing
Storage Temperature	-30°C ~ 70°C
Storage Humidity	5%~90% non-condensing





**IP-COM NETWORKS CO., LTD.**

Tower E3, No.1001, Zhongshanyuan Road,  
Nanshan District, Shenzhen, China. 518052

Service: [info@ip-com.com.cn](mailto:info@ip-com.com.cn)

Inquiry: [marketing@ip-com.com.cn](mailto:marketing@ip-com.com.cn)

Tel: +86-755-27653089