

Pro-6-M

AX3000 Indoor/Outdoor Wi-Fi 6 Access Point

Pro-6-M

AX3000 Indoor/Outdoor Wi-Fi 6 Access Point

Product Introduction

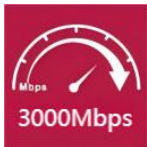
Pro-6-M is designed to provide Wi-Fi 6 signal for yard/garden, swimming pool, outdoor café, square, park etc., scenes. Adopt of 11ax Wi-Fi 6 technology, it delivers fast wireless speed 2402Mbps on 5GHz radio and 574Mbps on 2.4GHz radio. The independent power amplifier and high gain omnidirectional antenna enable it provide long range Wi-Fi 6 coverage. Both PoE 802.3at and passive PoE power supply supported make it to be installed flexibly. Supported to be managed by ProFi Cloud platform and ProFi APP make it easy to be maintain and manage.



Key Features

- Dual-band wireless speed up to 3000 Mbps
- 1*GE Ethernet port
- Compliant with 802.3at PoE
- IP65 Weatherproof Rating
- 802.11k/v/r Roaming
- Unified managed by ProFi APP and cloud.

Product Feature



11AX 3000Mbps High-speed Wireless Access

Pro-6-M supports 11ax Wi-Fi 6 technology, it delivers fast wireless speed 2402Mbps on 5GHz radio and 574Mbps on 2.4GHz radio. Also it comes with one gigabit Ethernet port, you can enjoy high speed wireless connection and perfect internet access.



Wireless optimization with AP controller

Pro-6-M can be do wireless optimization with IP-COM router and AP controller. In some case, the Aps deployment distance are too close, AP will turn to be a interference source to the adjacent AP. Then you can adjust the APs output power and channel through wireless optimization function.

Product Feature



Fast roaming, always smooth

Work with IP-COM router or AP controller, the pro-6-M can support fast roaming between adjacent APs. The wireless end devices like mobile phone, pad or laptop can switch to the best Wi-Fi 6 signal when the end devices move between APs, It keeps the online voice call , online games, video call smoothly



Flexible installation with PoE power supply

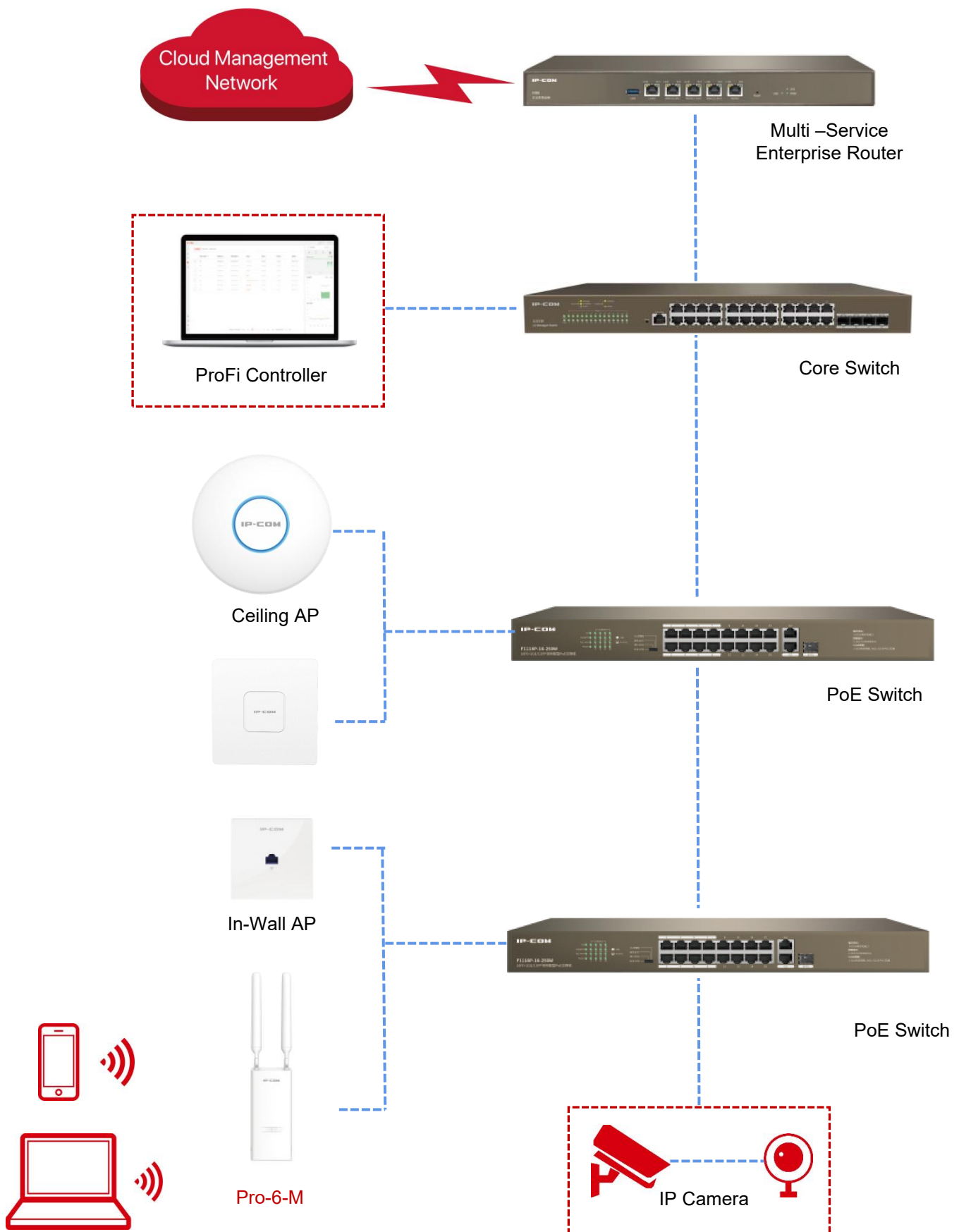
Pro-6-M supports to be unified management by AP controller and router locally. Also it supports to be managed by ProFi App and cloud platform, you can deliver configuration and monitor the network status in any location locally and remotely



Easy to manage and maintain

Pro-6-M supports to be unified management by AP controller and router locally. Also it supports to be managed by ProFi App and cloud platform, you can deliver configuration and monitor the network status in any location locally and remotely.

Application Scenarios



Specifications

Product Information	
Model	Pro-6-M
Category	Pole Mounting and Wall Mounting
Dimension	194.7* 83* 42.1 mm
Hardware Specifications	
Interface	1*10/100/1000 Mbps Ethernet Port (PoE)
Button	1*Reset
Power Supply	802.3at PoE, 48-51V Passive PoE
Maximum Power Consumption	16.8W
Port Surge Protection	6KV
Antenna	2*5dBid detachable omnidirectional
MIMO	2.4GHz, 2×2, MU-MIMO 5GHz, 2×2, MU-MIMO
Transmit Power	<ul style="list-style-type: none"> CE: <20 dBm (2.4 GHz, EIRP), <23 dBm(5 GHz, EIRP) FCC: <26 dBm (2.4 GHz), <28 dBm(5 GHz)
Reception Sensitivity	11b:-99dBm (1Mbps) 11a:-96dBm(6Mbps),-78dBm(54Mbps) 11g:-79dBm(54Mbps) 11n:20MHz:-96dBm(mcs0),-77dBm(mcs7) 11n:40MHz:-74dBm(mcs7) 11ax:20MHz:-67dBm(mcs11) 11ax:40MHz:-94dBm(mcs0),-64dBm(mcs11) 11ax:80MHz:-90dBm(mcs0),-59dBm(mcs11) 11ax:160MHz:-56dBm(mcs11)
Frequency Range	2412MHz-2472MHz,5150MHz- 5350 GHz, 5470 MHz-5.725 MHz, 5725 MHz-5850 MHz
Standard & Protocol	IEEE 802.11b/g/n/ac/ax
Maximum wireless speed	2.4GHz: 574Mbps 5GHz: 2402Mbps
Bandwidth	20MHz/40MHz/80MHz/160MHz
Software Specifications	
Operating Mode	AP/Client+AP

Specifications

Software Specifications	
Max. No. of SSID	2.4GHz: 8 5GHz: 4
Hide SSID	Supported
Max. Number of Clients	256
Recommended Clients	80
OFDMA	Supported
Beamforming	Supported
Fast roaming (802.11k/v/r)	Supported
MLO	/
WPA-PSK	Supported
WPA2-PSK	Supported
WPA	Supported
WPA2	Supported
WPA3-SAE	Supported
Access control	Supported
Adjustable power transmit	Supported
Automatic channel	Supported
AP isolation	Supported
Guest network	Supported
Connected clients control	Supported
RSSI Threshold	Supported
Weak signal terminal elimination	Supported
Prioritize 5 GHz	Supported
VLAN tagging for SSID	Supported
LED control	Supported
Device management	Web, Router, ProFi APP, AP Controller

Specifications

Software Specifications

MU-MIMO	Supported
Diagnostics tool	Supported
Reboot at specified interval	Supported
Scheduled reboot	Supported
Firmware upgrade	Supported
Reset	Supported
Backup configuration	Supported
Restore configuration	Supported

Others

Management Address	ipcwifi.com 10.16.16.169
Operation Temperature	-30°C ~ 60°C
Operating Humidity	10%~90% non-condensing
Storage Temperature	-30°C ~ 70°C
Storage Humidity	5%~90% non-condensing
Port Surge	6KV

www.ip-com.com.cn



SHENZHEN IP-COM NETWORKS CO., LTD.

Room 101, Unit A, First Floor, Tower E3, No.1001, Zhongshanyuan Road, Nanshan District, Shenzhen, China. 518052

Service: info@ip-com.com.cn

Inquiry: marketing@ip-com.com.cn

Tel: 86-755-27653089

Specifications are subject to change without notice. Copyright ©2024 SHENZHEN IP-COM NETWORKS CO.,LTD. All rights reserved.
IP-COM is the trademark of SHENZHEN IP-COM NETWORKS CO.,LTD. All other brand names mentioned herein are the trademark or registered trademarks of their respective holders.