

Quick Installation Guide

Wireless USB Adapter
U9&U10



Get Support and Services

Scan the QR code or visit www.tendacn.com for installation videos, technical specifications, user guides and more information. You can see the product model on the product label. The label can be found on the back of the device.

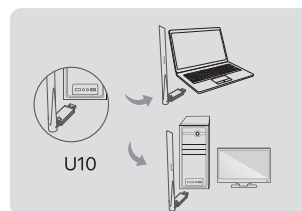
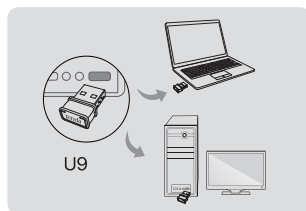
Install the wireless USB adapter (Example: Windows 10)



Tips

- This wireless USB adapter is compatible with mainstream operating systems, including Windows XP/7/8/8.1/10 and 11.
- For better internet experience, you are recommended to **uninstall** any installed wireless USB adapter (see **Scenario 2** in the **Appendix**) and **disable or toggle off** the built-in wireless adapter in the computer (see **Scenario 1** in the **Appendix**) before installing the wireless USB adapter.

1. Connect your wireless USB adapter to a USB port on your computer.

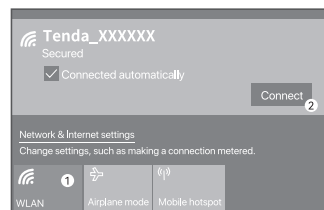


Wait a moment until the initialization finishes. Now you can connect to the Wi-Fi network.



Connect to a Wi-Fi network (Example: Windows 10)

- For computers without built-in wireless adapters: Select the desired Wi-Fi, and then click **Connect**.

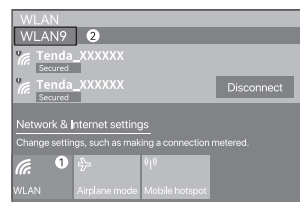


- For computers with built-in wireless adapters: If you use this wireless USB adapter to connect to a Wi-Fi, select the WLAN corresponding to the wireless USB adapter, such as **WLAN9**. Then connect to the Wi-Fi.



Tips

WLAN is the default name of the built-in wireless adapter in the computer.



Appendix

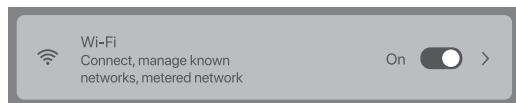
Scenario 1: Disable or toggle off the built-in wireless adapter in the computer.

- **Disable the built-in wireless adapter in the computer (Example: Windows 10)**

1. Click or , and then select **Network & Internet settings**.
2. Click **Change adapter options**.
3. Find and right-click the wireless adapter that built-in the computer, and click **Disable**.

- **Toggle off the WLAN function of the built-in wireless adapter in the computer (Only available for Windows 11)**

1. Right-click or , then select **Network & Internet settings**.
2. Find and click **WLAN** to enter the settings page.

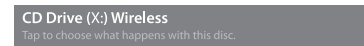


3. Toggle off the WLAN corresponding to the built-in wireless adapter in the computer.

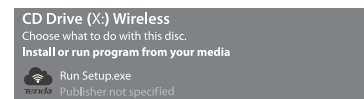
Scenario 2: Uninstall the existing wireless USB adapter driver on your computer.
(Example: Windows 10)

1. Click , and then click .
2. Click **Apps**.
3. Target and click the wireless USB adapter program you want to uninstall, and click **Uninstall**.

2. (Optional) Click **CD Drive (X:) Wireless**.



3. Double-click **Run Setup.exe** in the pop-up window.



Tips

If the pop-up window does not appear, refer to **Q2** in **FAQ**.

FAQ

Q1. The computer is connected to the Wi-Fi network using the wireless USB adapter, but the Wi-Fi network often disconnects. What should I do?

A1. Try the following solutions:

- Connect the wireless USB adapter to your computer without the expansion dock or USB hub.
- Plug the wireless USB adapter into another USB port on the computer.
- Use the wireless USB adapter within the range of Wi-Fi signal coverage, and there are no surrounding occlusions blocking signals.

Q2. The pop-up window does not appear after the wireless USB adapter is connected to the computer. What should I do?

A2. Refer to the following steps (Example: Windows 10):

1. Double-click **Computer** () on the desktop.
2. Double-click **CD Drive (X:) Wireless**, and follow the instructions to install the wireless USB adapter.



RECYCLING

This product bears the selective sorting symbol for Waste electrical and electronic equipment (WEEE). This means that this product must be handled pursuant to European directive 2012/19/EU in order to be recycled or dismantled to minimize its impact on the environment. User has the choice to give his product to a competent recycling organization or to the retailer when he buys a new electrical or electronic equipment.

Safety Precautions

Before performing an operation, read the operation instructions and precautions to be taken, and follow them to prevent accidents. The warning and danger items in other documents do not cover all the safety precautions that must be followed. They are only supplementary information, and the installation and maintenance personnel need to understand the basic safety precautions to be taken.

- Do not use the device in a place where wireless devices are not allowed.
- Operating environment: Temperature: 0°C - 40°C; Humidity: (10% - 90%) RH, non-condensing; Storage environment: Temperature: -40°C - 70°C; Humidity: (5% - 90%) RH, non-condensing.
- Keep the device away from water, fire, high electric field, high magnetic field, and inflammable and explosive items.
- If such phenomena as smoke, abnormal sound or smell appear when you use the device, immediately stop using it and contact the after-sales service personnel.
- Disassembling or modifying the device or its accessories without authorization voids the warranty, and might cause safety hazards.

For latest safety precautions, see **Safety and Regulatory Information** on www.tendacn.com.

LA OPERACIÓN DE ESTE DISPOSITIVO ESTA SUJETA A LAS SIGUIENTES CONDICIONES:

- a) Es posible que este equipo o dispositivo no cause interferencia perjudicial.
- b) Este equipo o dispositivo debe aceptar cualquier tipo de interferencia, incluyendo la que pueda causar su operación no deseada.

Estimado usuario: Antes de utilizar este producto lo invitamos a leer el siguiente manual para que conozca todas sus funciones y características.

Producto	NOMBRE DEL PRODUCTO: Adaptador USB inalámbrico MODELO: U9, U10
PAIS DE ORIGEN: CHINA	



CE Mark Warning

This is a Class B product. In a domestic environment, this product may cause radio interference, in which case the user may be required to take adequate measures.

NOTE: (1) The manufacturer is not responsible for any radio or TV interference caused by unauthorized modifications to this equipment. (2) To avoid unnecessary radiation interference, it is recommended to use a shielded RJ45 cable.

Declaration of Conformity

Hereby, SHENZHEN TENDA TECHNOLOGY CO., LTD. declares that the device is in compliance with Directive 2014/53/EU.

The full text of the EU declaration of conformity is available at the following internet address:

<https://www.tendacn.com/download/list-9.html>

Operating Frequency/Max Output Power

<p>English: Operating Frequency/Max Output Power</p> <p>Polisk: Częstotliwość pracy / Maksymalna moc wyjściowa</p> <p>Deutsch: Betriebsfrequenz/Max. Ausgangsleistung</p> <p>Русский: Рабочая частота/макс. выходная мощность</p> <p>Français: Fréquence de fonctionnement/Puissance de sortie maximale</p> <p>Nederlands: Bedrijfsfrequentie/Maximaal uitgangsvermogen</p> <p>Čeština: Provozní frekvence/maximální výstupní výkon</p> <p>Română: Frecvența de funcționare/Puterea maximă de ieșire</p> <p>Português: Frequência de Funcionamento/Potência Máxima de Saída</p> <p>Svenska: Driftsfrekvens / Max Uteffekt</p> <p>Slovenský: Prevádzková frekvencia/maximálny výstupný výkon</p> <p>Ελληνικά: Συχνότητα Λειτουργίας/Μέγιστη Ισχύς Εξόδου</p> <p>Magyar: Működési frekvencia/Maximális kimeneti teljesítmény</p> <p>Italiano: Frequenza operativa/Potenza di uscita massima</p> <p>Български: Работна честота/максимална изходна мощност</p> <p>Español: Frecuencia operativa/Potencia de salida máxima</p> <p>Eesti: Töösagedus/Max väljundvõimsus</p> <p>Dansk: Driftsfrekvens/Maks. Udgangseffekt</p> <p>Suomi: Toimintataajuus/maksimilähtöteho</p> <p>Hrvatski: Radna frekvencija/Maksimalna izlazna snaga</p> <p>Latviešu: Operējošās frekvences/ Maksimālā jauda</p> <p>Lietuvių: Darbinis dažnis / maksimali išėjimo galia</p> <p>Slovensčina: Delovna frekvenca/Največja izhodna moč</p> <p>Türkçe: Çalışma Frekans/Maks. Çıkış Gücü</p> <p>الإخراج لطاقلة الأقصى الحد / التشغيل تردد بمجموعي</p>	<p>2412MHz-2472MHz/20dBm</p> <p>5150MHz-5250MHz(indoor use only)/23dBm</p>
--	--



FCC Statement

This equipment has been tested and found to comply with the limits for a Class B digital device, pursuant to Part 15 of the FCC Rules.

These limits are designed to provide reasonable protection against harmful interference in a residential installation. This equipment generates, uses and can radiate radio frequency energy and, if not installed and used in accordance with the instructions, may cause harmful interference to radio communications. However, there is no guarantee that interference will not occur in a particular installation. If this equipment does cause harmful interference to radio or television reception, which can be determined by turning the equipment off and on, the user is encouraged to try to correct the interference by one or more of the following measures:

- Reorient or relocate the receiving antenna.
- Increase the separation between the equipment and receiver.
- Connect the equipment into an outlet on a circuit different from that to which the receiver is connected.
- Consult the dealer or an experienced radio/TV technician for help.

The device is for indoor usage only.

Operation is subject to the following two conditions: (1) this device may not cause harmful interference, and (2) this device must accept any interference received, including interference that may cause undesired operation.

Radiation Exposure Statement

This device complies with FCC radiation exposure limits set forth for an uncontrolled environment and it also complies with Part 15 of the FCC RF Rules.

This device has been tested and comply with FCC Body SAR limits at 5mm distance.

Caution:

Any changes or modifications not expressly approved by the party responsible for compliance could void the user's authority to operate this equipment.

This transmitter must not be co-located or operating in conjunction with any other antenna or transmitter.

Operating frequency: 2412-2462 MHz, 5150MHz-5250MHz

NOTE: (1) The manufacturer is not responsible for any radio or TV interference caused by unauthorized modifications to this equipment. (2) To avoid unnecessary radiation interference, it is recommended to use a shielded RJ45 cable.

Restrictions in the 5 GHz Band

	AT	BE	BG	CH	CY	CZ	DE	DK	EE	EL	ES	FI	FR	HR	HU	IE
	IS	IT	LI	LT	LU	LV	MT	NL	NO	PL	PT	RO	SE	SI	SK	UK(NI)

	UK
--	----

English-Attention: In EU member states, EFTA countries, Northern Ireland and Great Britain, the operation in the frequency range 5150MHz - 5250MHz is only permitted indoors.

Polisk-Uwaga: W państwach członkowskich UE, krajach Europejskiego Stowarzyszenia Wolnego Handlu (EFTA), Irlandii Północnej i Wielkiej Brytanii praca w zakresie częstotliwości 5150 MHz - 5250 MHz jest dozwolona tylko w pomieszczeniach.

Deutsch-Achtung: In den EU-Mitgliedsstaaten, den EFTA-Ländern, Nordirland und Großbritannien ist der Betrieb im Frequenzbereich 5150 MHz - 5250MHz nur in Innenräumen erlaubt.

Français-Attention: Dans les États membres de l'UE, les pays de l'AELE, l'Irlande du Nord et la Grande-Bretagne, l'utilisation dans la gamme de fréquences 5150MHz - 5250MHz n'est autorisée qu'en intérieur.

Nederlands-Aandacht: In de EU-lidstaten, de EVA-landen, Noord-Ierland en Groot-Brittannië is gebruik in het 5150 MHz - 5250 MHz frequentiebereik alleen binnenshuis toegestaan.

Čeština-Pozor: V členských státech EU, zemích ESVO, Severním Irsku a Velké Británii je provoz ve frekvenčním rozsahu 5150 MHz - 5250 MHz povolen pouze v interiéru.

Română-Atenție: În statele membre UE, țările EFTA, Irlanda de Nord și Marea Britanie, operarea în intervalul de frecvență 5150 MHz - 5250 MHz este permisă numai în interior.

Português-Atenção: Nos estados membros da UE, países da EFTA, Irlanda do Norte e Grã-Bretanha, o funcionamento na gama de frequências 5150MHz - 5250MHz só é permitido no interior.

Svenska-Uppmärksamhet: I EU medlemsstater, EFTA-länderna, Nordirland och Storbritannien är det endast tillåtet att använda frekvensområdet 5150 MHz - 5250 MHz inomhus.

Slovenský-Pozor: V členských štátoch EÚ, krajinách EFTA, Severnom Írsku a Veľkej Británie je prevádzka vo frekvenčnom pásme 5150 MHz - 5250 MHz povolená len v interiéri.

Ελληνικά-Προσοχή: Στα κράτη μέλη της ΕΕ, στις χώρες της ΕΖΕΣ, στη Βόρεια Ιρλανδία και στη Μεγάλη Βρετανία, η λειτουργία στην περιοχή συχνοτήτων 5150 MHz - 5250 MHz επιτρέπεται μόνο σε εσωτερικούς χώρους.

Magyar-Figyelem: Az EU-tagállamokban, az EFTA-országokban, Észak-Írországban és Nagy-Britanniában az 5150 MHz-5250 MHz-és frekvenciatarományban való működés csak beltérben engedélyezett.

Italiano-Attenzione: Negli Stati membri dell'UE, nei Paesi EFTA, nell'Irlanda del Nord e in Gran Bretagna, il funzionamento nella gamma di frequenze 5150 MHz - 5250 MHz è consentito solo in ambienti chiusi.

Български-Внимание: В страните-членки на ЕС, страните от ЕАСТ, Северна Ирландия и Великобритания, работата в честотния диапазон 5150MHz - 5250MHz е разрешена само на закрито.

Español-Atención: En los estados miembros de la UE, los países de la AELC, Irlanda del Norte y Gran Bretaña, el rango de frecuencia operativa de 5150MHz a 5250MHz solo está permitido en interiores.

Eesti-Tähelepanu: EL-0 liikmesriikides, EFTA riikides, Põhja-Iirimaal ja Suurbritannias on sagedusvahemikus 5150 MHz-5250 MHz kasutamise lubatud ainult siseruumides.

Dansk-Bemærk: I EU-medlemslandene, EFTA-landene, Nordirland og Storbritannien er drift i frekvensområdet 5150 MHz - 5250 MHz kun tilladt indendørs.

Suomi-Huom: Eu-maissa, EFTA-maissa sekä Isoissa-Britanniassa ja Pohjois-Irannissa taajuusalueetta 5150 MHz - 5250 MHz on sallittua käyttää ainoastaan sisätiloissa.

Hrvatski-Pozornost: U državama članicama EU, zemljama EFTA-e, Sjevernoj Irskoj i Velikoj Britaniji, rad u frekvencijskom rasponu od 5150 MHz do 5250 Mhz dopušten je samo u zatvorenom prostoru.

Latviešu-Uzmanību: ES valstīs, EBTA valstīs, Ziemeļīrijā un Lielbritānijā, operēšana iekšējās ir atļauta tikai 5150 MHz - 5250 MHz diapazonā.

Lietuvių-Dėmesio: ES valstybėse narėse, ELPA šalysė, Šiaurės Airijoje ir Didžiojoje Britanijoje 5150 MHz - 5250 MHz dažnių diapazone leidžiama veikti tik patalpose.

Slovensčina-Pozor: V državah članicah EU, državah EFTA, Severni Irski in Veliki Britaniji je delovanje v frekvenčnem območju 5150 MHz - 5250 MHz dovoljeno samo v zaprtih prostorih.

Norsk-OBS: I EUs medlemsland, EFTA-land, Nord-Irland og Storbritannia er drift i frekvensområdet 5150 MHz - 5250 MHz kun tillatt innendørs.

Íslenska-Athugi: Í aðildarríkjum ESB, EFTA-landum, Norður-Írlandi og Bretlandi er rekstur á tréhnáviðinu 5150 MHz - 5250 MHz aðeins leyfður innandyra.

Technical Support

Shenzhen Tenda Technology Co., Ltd.

Floor 6-8, Tower E3, No.1001, Zhongshanyuan Road, Nanshan District, Shenzhen, China. 518052

Website: www.tendacn.com

E-mail: support@tenda.com.cn

support.us@tenda.cn (North America Support)

support.uk@tenda.cn (United Kingdom)

Copyright

© 2024 Shenzhen Tenda Technology Co., Ltd. All rights reserved.

Tenda is a registered trademark legally held by Shenzhen Tenda Technology Co., Ltd. Other brand and product names mentioned herein are trademarks or registered trademarks of their respective holders. Specifications are subject to change without notice.