

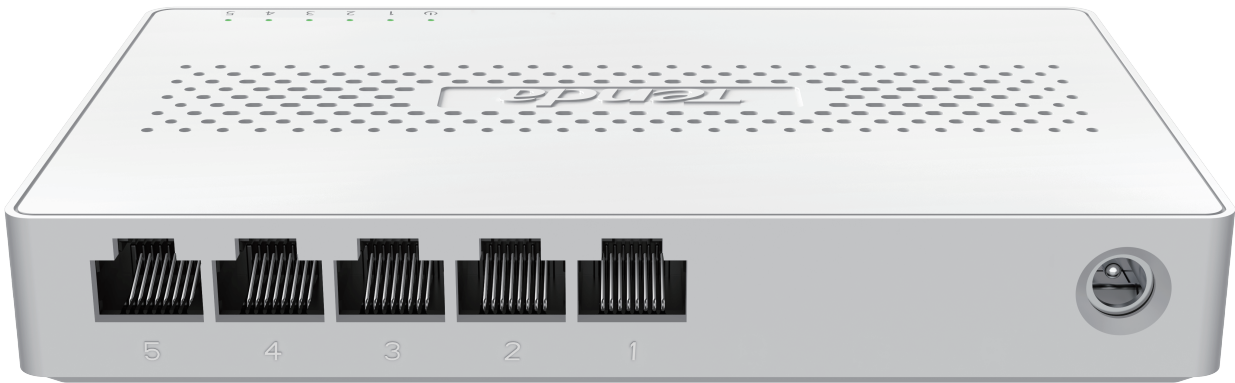
Tenda



SE105

5-Port 2.5G Ethernet Switch

Link
More



SE105

5-Port 2.5G Ethernet Switch

Products Description

SE105 is a 5-port 2.5G Ethernet switch independently designed by Tenda. It provides 5*2.5Gbps RJ45 ports and can be connected to computers, NAS, IPTV, WIFI7 AP, etc. to meet the needs of high-speed Internet access. It is an perfect access device for high-speed network deployment in SMEs,SOHOs,villa or wireless networking scenarios.

Key Feature

- Compliant with IEEE802.3/u/ab/bz/x/z
- 5*100/1000/2500Mbps RJ45 ports;
- 16 K MAC address table and MAC address auto learning
- IEEE 802.3x full duplex flow control and half duplex backpressure flow control
- 25 Gbps switching fabric for non-blocking wire speed forwarding
- Desktop mounting & Wall mounting

Product Features



High-speed Bandwidth

The switch provides five 2.5 Gbps RJ45 ports to ensure high-speed network requirements



Small and Exquisite

Equipped with plastic shell, mini shape and exquisite design



Plug and Play

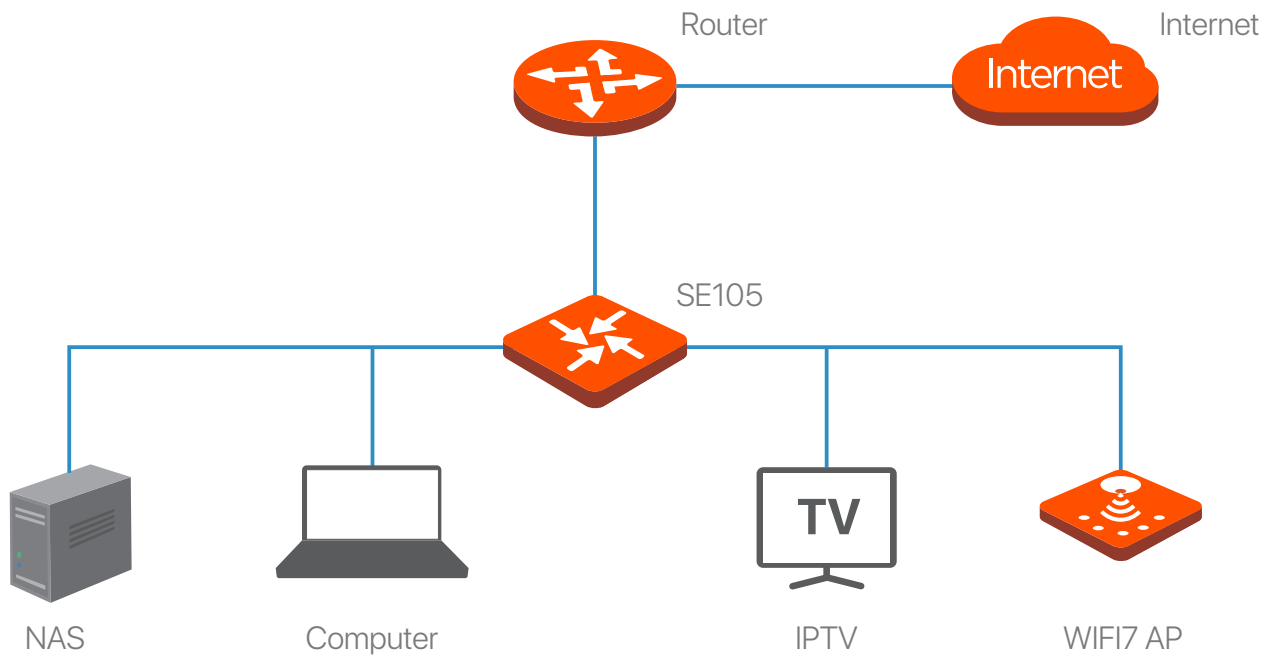
Plug and play, you can easily use a variety of networking environments without configuration



Smooth upgrade

Easily and smoothly upgrade bandwidth to 2.5G without changing the original network architecture

Application



Product specifications

Product Model	SE105
Specifications	
Standard	Compliant with IEEE802.3/u/ab/bz/x
LED Indicators	1 * Power 5 * Link/Act
Ports	5*2500Mbps RJ45 ports
Forwarding Mode	Store-and-forward
Switching Capacity	25Gbps
Forwarding Rate	18.6Mpps
MAC Address Table	16K
Power Adapter	Input: 100-240V AC 50/60Hz Output: 12V 1A DC
Dimensions (L × W × H)	142*90*24mm
Environment	Operating temperature: 0°C - 40°C Storage temperature: -40°C - 70°C Operating humidity: (10% - 90%) RH, non-condensing Storage humidity: (5% - 90%) RH, non-condensing

Software Features

SHENZHEN TENDA TECHNOLOGY CO.,LTD.

Tenda Technology Bldg.Int' IE-City,
#1001 Zhong Shan Yuan Rd.,Nanshan District,Shenzhen China.

E-mail: support@tenda.com.cn

Tel: +86-755-2765 7098

Fax: +86-755-2765 7178

PC: 518055

