

Tenda



IC6-LRS

3MP infrared Conch Security Camera



IC6-LRS

3MP infrared Conch Security Camera

Products Description

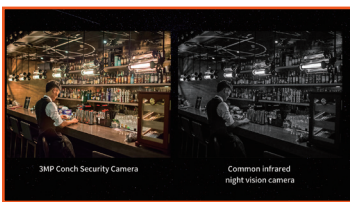
The Conch Security Camera IC6-LRS is a high-performance 3MP (2304*1296) engineering camera that integrates such functions as infrared night vision, motion detection and remote audio pickup. It is commonly used in factories, supermarket, shops, buildings, and some large-and small-scale engineering monitoring scenarios where contractors can use their mobile phones for remote real-time monitoring.

Product Features



Clear monitoring details from 3MP HD images

Equipped with a high-performance image sensor, the camera can display 3MP HD images (2304*1296) with more monitoring details.



Starlight night vision with good low-light performance at the price of infrared night vision

With starlight night vision offered by the highly sensitive sensor, the camera is more light-sensitive than common cameras and can display finer images than common infrared cameras.



H.265 coding technology for smooth video and efficient data storage

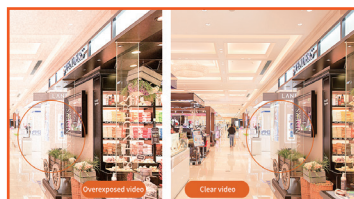
Compared with H.264, the new-generation H.265 saves 50% in video data size, which further smoothes the videos with band width saved and saves the data storage space.



Remote audio pickup over 5 m supported by the inbuilt highly sensitive microphone

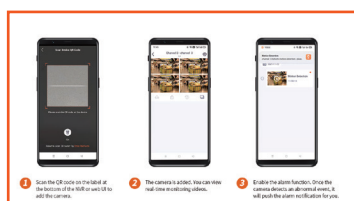
With an inbuilt highly sensitive microphone which supports remote audio pickup over 5 m, the camera can sync audio and video.

Product Features



Intelligent WDR and 3D DNR for clear image

The camera uses WDR technology which compensates for backlighting on backlit images and 3D noise reduction technology which reduces image noise to display clear monitoring video.



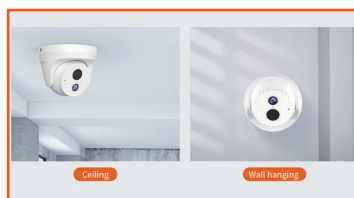
Remote control by mobile phone and detect alarms accurately

The camera supports remote control on the app to view real-time monitoring. Once the camera detects an abnormal event, it will push the alarm notification remotely.



Compatible with NVRs of other brands with ONVIF supported

It can be used with mainstream NVRs in the market, featuring high compatibility.



Wall-mounted or surface-mounted installation

The camera can be either wall-mounted or surface-mounted, quite flexible and convenient.

Specification

Hardware Specifications

Ports	Power: DC 12V 1A Ethernet: 1*RJ45 100M Ethernet port on tail line
Lens	4mm@F2.2
Product Size	106.8mm*90.5mm

Video Specifications

Resolution	2304*1296
Coding standard	H.265/H.264
Day and Night Shift Mode	Built-in IR-CUT double filter
Noise Reduction	3D digital noise reduction
DWDR	Support
Backlight Compensation	Support
ROI	Support

Others

Smart Alarm	S-motion detection&Human Shape detection&Customized area detection
Audio	Built-in microphone(Five meters pickup)
Network protocol	RTSP、HTTP、DHCP、DDNS、NTP、ONVIF
Internet Network protocol	IPV4
Add device method	Wired
Infrared Night Vision Distance	30 Meters
Temperature	Operating temperature: -10°C~ 50°C Storage temperature: -40°C~70°C
Humidity	Operating humidity: 10%-95%RH (non-condensing) Storage humidity: 3% ~ 95%RH (non-condensing)
Certification	CE、RoHs、FCC
Package Contents	Security Camera Quick installation guide General public license notice Installation template Wall-mounted accessory kit

SHENZHEN TENDA TECHNOLOGY CO.,LTD.

Tenda Technology Bldg.Int'l E-City,
#1001 Zhong Shan Yuan Rd.,Nanshan District,Shenzhen China.

E-mail:support@tenda.com.cn

Tel:+86-755-2765 7098

Fax:+86-755-2765 7178

PC:518055