

Tenda

Beli
beautiful life

SS3

Smart Wi-Fi Light Switch

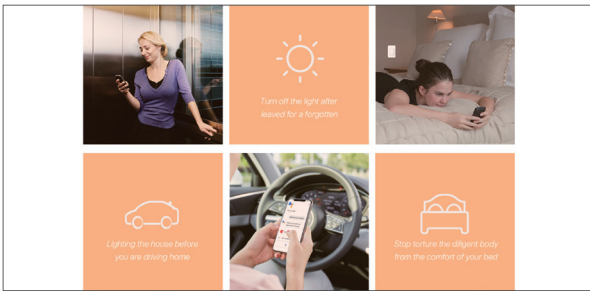


SS3

Smart Wi-Fi Light Switch

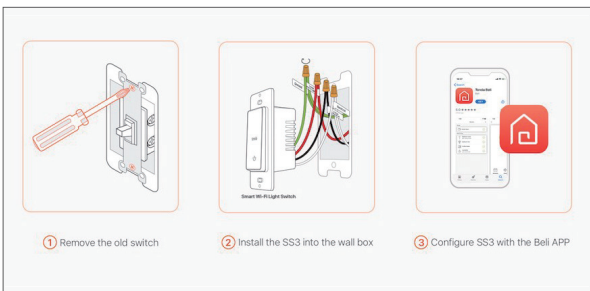
The SS3 Smart Wi-Fi Light Switch can turn electronics on & off from anywhere with your smartphone using the Beli APP. You can schedule the switch to be on & off automatically when you're away. The SS3 works directly with Amazon Alexa and Google Assistant to manage your devices. It works on secured 2.4GHz wireless networks without the need for a separate hub. The standard size conforms to the electrical specifications and is suitable for most switch bottom boxes.

Selling Points



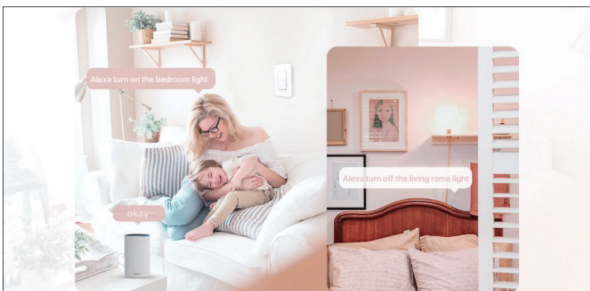
Smart Control from Everywhere

Smart control your light status through the Tenda Beli App or your voice. To provide you with intimate intelligent lamp control, free hands and feet of labor, give yourself more relaxed and comfortable.



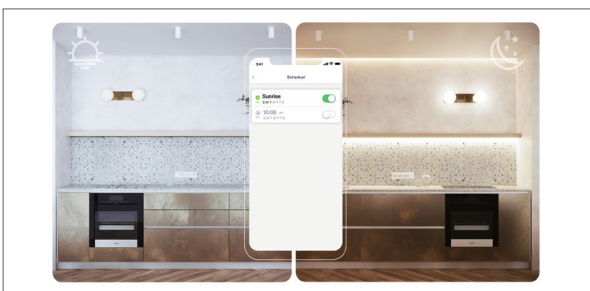
Easy to Install and Get Done in Three Steps

Follow the step-by-step instructions to complete the installation, to experience the convenience of smart life.



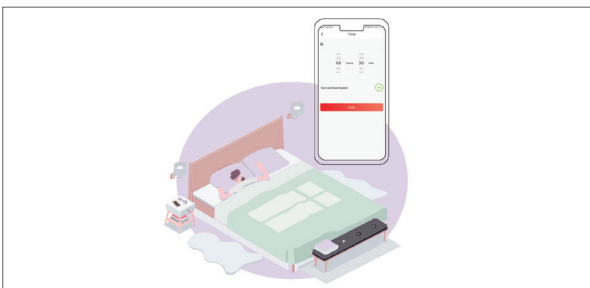
Voice Control

Compatible with Alexa and Google Assistant, your voice can control devices easily.



Customize Your Own Lifestyle

Create on/off schedules so that your devices can turn on and off on their own. Enable the scene you want with a press of a button on our Beli App.



Countdown Function

Beli™ supports the countdown switch setting, you can configure the length of your sleep at night, or you can configure the length of your bedside reading in advance.

Specification

NETWORK	
Protocol	IEEE 802.11b/g/n
Wireless Type	2.4GHz
System Requirements	Android 5.0 or Higher, iOS 10 or Higher
AI Control	Amazon Alexa and Google Assistant
GENERAL	
Certification	FCC, ETL
Package Contents	Smart Wi-Fi Light Switch*1 Wall Plates*1 Quick Installation Guide*1 Wire Nuts*5 Screw*2 Wire Label*1
Environment	Operating Temperature: -10 °C ~45 °C
Dimensions	With Panel 114x70x45mm Without Panel 105x45x45mm
Material	PC
Buttons	Multiplex Power Button
Packaging Dimensions	81 x 65 x 129mm
WORKING STATUS	
Input voltage	100-120V~, 60Hz
Power to Access	Neutral Wire Required
Output Current	15A
Load Power	/

SHENZHEN TENDA TECHNOLOGY CO.,LTD.

Tenda Technology Bldg.Int'l E-City,
#1001 Zhong Shan Yuan Rd.,Nanshan District,Shenzhen China.

E-mail:support@tenda.com.cn

Tel:+86-755-2765 7098

Fax:+86-755-2765 7178

PC:518055

