

*Tenda*



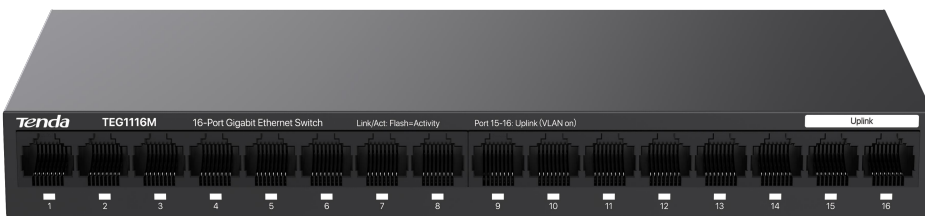
All for better networking.

**TEG1116M**

16-Port Gigabit Ethernet Switch

[www.tenda.com.cn](http://www.tenda.com.cn)

Link  
More



# TEG1116M

## 16-Port Gigabit Ethernet Switch

### Descriptions

TEG1116M is a Gigabit unmanaged Ethernet switch developed by Tenda. Its full-duplex transmission rate can reach 2000 Mbps, ensuring timely transmission of large files and smoothness of videos. The switch features a mini steel shell, a fanless design, and wire-speed forwarding of all ports. It comes with a power adapter for power supply, and can connect to such network devices as computers and IP cameras. The switch also supports one-key isolation mode switching. With the advantages of plug and play functionality, easy installation and high performance, it offers a cost-effective solution for video surveillance and wired networking in such small and medium-sized scenarios as small and micro businesses, villas, and stores.

# Features

---

- Comply with IEEE 802.3, IEEE 802.3u, IEEE 802.3ab, and IEEE 802.3x standards.
- Provide 16 10/100/1000 Mbps Base-T Ethernet ports and support auto MDI/MDIX.
- Support 8K MAC address table and MAC address auto-learning.
- Support 10K Jumbo Frame, improving the forwarding rate of large files.
- Support full duplex IEEE 802.3x flow control and half duplex back pressure flow control.
- Support unblocked wire speed forwarding for all ports.
- Integrated professional lightning protection circuit offers 6kV lightning protection for all Ethernet ports.
- One-key VLAN function helps isolate broadcast storms effectively.
- Feature a mini steel shell, plug and play functionality, and an simple-to-use design.

## Product Features

---



### All Gigabit Ports

The switch provides 16 10/100/1000 Mbps auto-negotiation RJ45 ports. The full-duplex transmission rate of the switch can reach 2000 Mbps, and all ports feature wire speed forwarding, ensuring high performance for processing applications that require high bandwidth.



### One-key VLAN

Under the VLAN mode, ports 1 to 14 cannot communicate with each other, but can communicate with uplink ports 15 to 16, isolating broadcast storms and enhancing network security.



### 6kV Lightning Protection

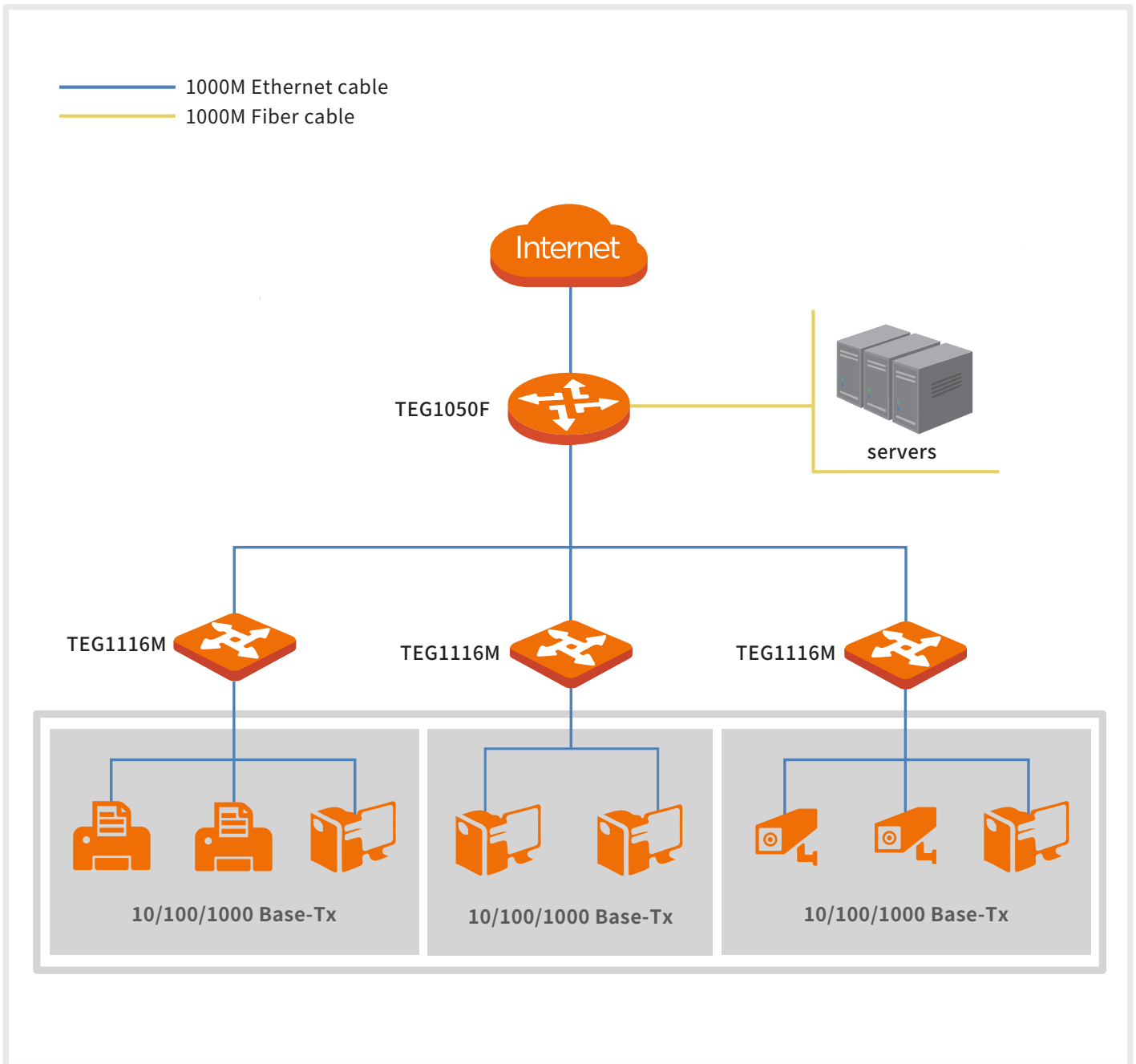
This switch provides 6 kV lightning protection for all Ethernet ports, and supports over-temperature, over-voltage and surge current protection.



### Mini Steel Shell

The switch features a mini steel shell design. With plug & play function, it needs no professional settings and can be used for networking directly, greatly reducing the maintenance cost.

# Application



# Product Specifications

Product model	
Network standards	IEEE802.3、IEEE802.3u、IEEE802.3x、IEEE802.3ab
LED indicators	One Link/Act LED indicator for each Gigabit port One Power LED indicator for each device
Ports	16*10/100/1000Base-T Ethernet ports
Transmission medium	Ethernet: CAT3 UTP or better Fast Ethernet: CAT5 UTP or better Gigabit Ethernet: CAT5e UTP or better
Dimensions (L x W x H)	235mm*103mm*27mm
Product material	Steel shell
Fan	Fanless
Protection	Port lightning protection: 6 kV Electrostatic protection: -Air discharge: $\pm 8$ kV -Contact discharge: $\pm 6$ kV
Forwarding mode	Store-and-forward
Switching capacity	32Gbps
Packet forwarding rate	10Mbps: 14880pps 100Mbps: 148800pps 1000Mbps: 1488000pps
Buffer	2Mb
MAC address table	8K
Jumbo frame	10K
Power supply	Input: 100 - 240V AC 50/60Hz, 0.4A Output: 12V 1A

# Product Specifications

Product model	
Whole switch consumption	Max: <12 W
Mounting methods	Desktop mounting: Support Wall mounting: Support Rack mounting: Not Support
Environment	Operating temperature: 0°C - 40°C Storage temperature: -40°C - 70°C Operating humidity: (10% - 90%)RH, non-condensing Storage humidity: (5% - 90%)RH, non-condensing
Certificates	FCC, CE, RoHS
Software features	
Protocol	CDMA/CD
MAC address learning	Auto learning and auto updating
Function	One-key VLAN (In this mode, ports 1 to 14 cannot communicate with each other, but can communicate with ports 15 to 16.)

## SHENZHEN TENDA TECHNOLOGY CO.,LTD.

Tenda Technology Bldg.Int' IE-City,  
#1001 Zhong Shan Yuan Rd.,Nanshan District,Shenzhen China.

E-mail:support@tenda.com.cn

Tel:+86-755-2765 7098

Fax:+86-755-2765 7178

PC:518055



Like us on Facebook



Follow us on Twitter