

Tenda



All for better networking.

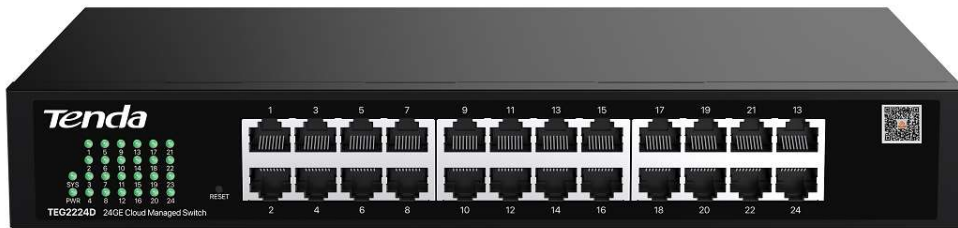
TEG2224D

24 GE Cloud Managed Switch

TEG2224D

24GE Cloud Managed Switch

Descriptions



TEG2224D is a 24-port Gigabit switch supporting Tenda CloudFi web and app management. Featuring automatic detection and alerting for loops and unauthorized DHCP, this switch elevates your network maintenance effortlessly from the comfort of your home, saving time and money.

Features

- Compliant with IEEE802.3, IEEE802.3u, IEEE802.3ab, IEEE802.3x, IEEE802.3z, IEEE802.1p, IEEE802.1q standards
- 24 × 10/100/1000 Base-T Ethernet ports
- 8 K MAC address table and MAC address auto learning
- IEEE 802.3x full-duplex flow control and half-duplex backpressure flow control
- 48 Gbps switching fabric for non-blocking line-speed forwarding
- CloudFi web and app management
- Support QVLAN, DHCP Snooping, loop protection, etc.

USPs



Smart Management

The switch can be managed through both the Tenda Cloud web UI and CloudFi App. You can scan the QR codes on the switches to add them in batches for cloud management. The cloud platform will automatically generate a visible network topology for you to view the operation status of each device in a project anytime and anywhere.



Log alarm

Supports abnormal status protection and real-time alarms such as loops and private routers .



All Gigabit

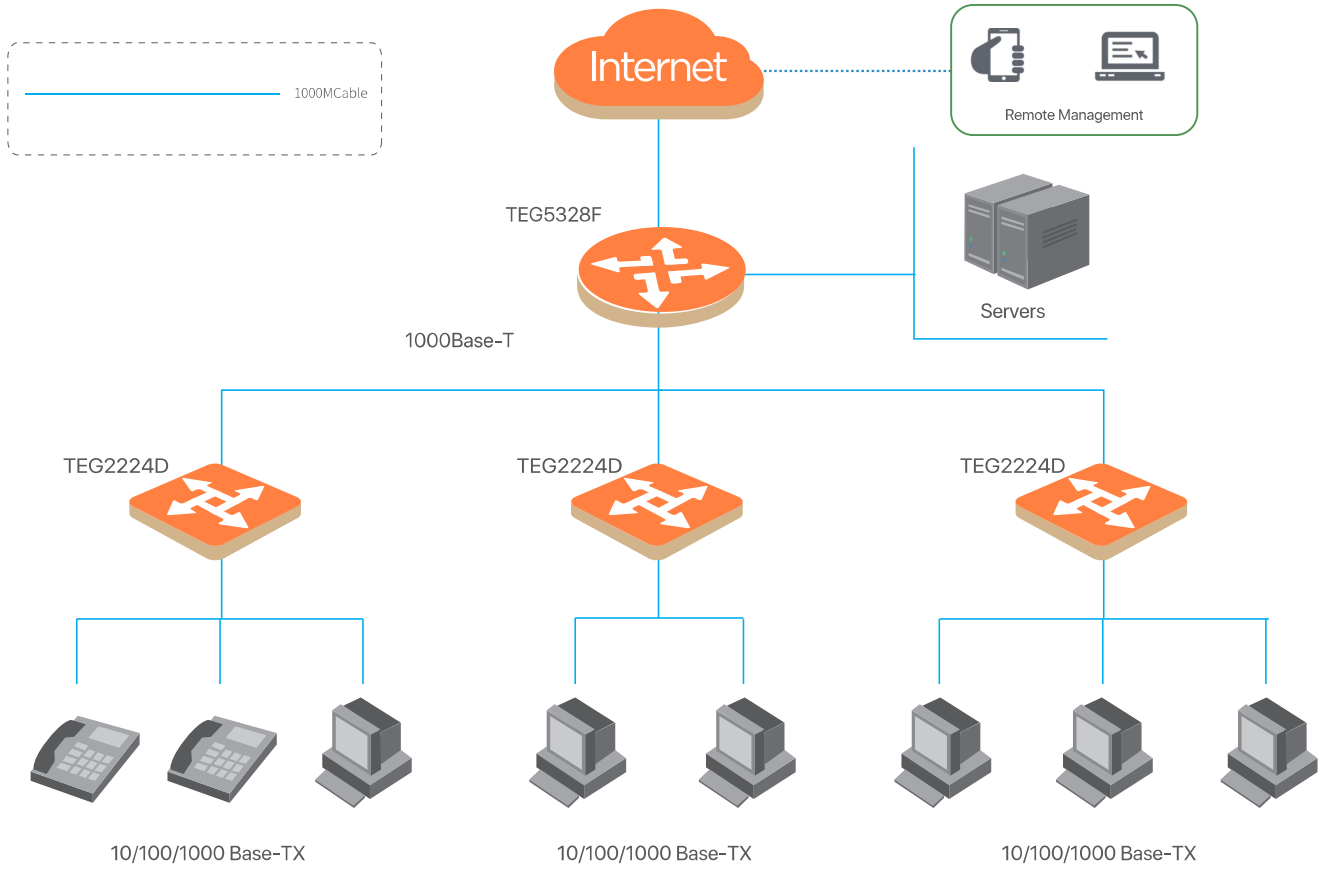
The switch provides 24 gigabit ports, 10 times faster, ensuring smooth transmission of large files and videos.



Abundant Management Features

The switch offers QVLAN, VLAN transparent transmission, traffic statistics, loop guard, MAC address binding, DHCP Snooping and other functions, suitable for various scenarios of network deployment.

Typical Scenario



Specifications

Hardware specifications	
Network Standards	IEEE 802.3, IEEE 802.3u, IEEE 802.3ab, IEEE 802.3x, IEEE 802.3z, IEEE 802.1q, IEEE 802.1p
LED indicators	One Link/Act LED indicator for each port One PWR/SYS LED indicator for each device
Fixed ports (Data)	24 × 10/100/1000 Base-T Ethernet ports
Lightning protection	Port: 6 kV Power supply: 6 kV
Forwarding mode	Store-and-forward
Switching capacity	48.0Gbps
Packet forwarding rate	35.7Mpps
Switching buffer	4M
MAC address table	8 K
Input voltage	100 - 240V AC 50/60Hz
Dimensions (L x W x H)	294 mm × 178mm × 44 mm
Environment	Operating temperature: 0°C - 45°C Storage temperature: -40°C - 70°C Operating humidity: (10% - 90%) RH, non-condensing Storage humidity: (5% - 90%) RH, non-condensing
Certificates	FCC, CE, RoHS

Specifications

Software Features	
Security Features	Support whitelist binding of MAC addresses, ports and VLAN Support port isolation
VLAN	Support VLAN transparent transmission Support IEEE 802.1q VLAN
DHCP	Support DHCP Client Support DHCP Snooping
IGMP	Supports IGMP fast leave Supports IGMP Report Suppression
QoS	Support DSCP priority Support SP, SWP, WP
Port Properties	Support port flow control Support port isolation Support N:1 port mirroring Support port statistics of received and transmitted packets, conflict packets and CRC error packets
Rate Limit	Support ingress and egress rate limits on ports
Loop Guard	Support loop detection and guard on each port
Storm Control	Support storm control on ports
Upgrade, Import and Export	Support HTTP upgrade Support configuration import and export
Management and Maintenance	Support CloudFi App management Support Cloud web UI management Support local web UI management Support ping test

SHENZHEN TENDA TECHNOLOGY CO.,LTD.

Tenda Technology Bldg.Int' | E-City,
#1001 Zhong Shan Yuan Rd.,Nanshan District,Shenzhen China.

E-mail:support@tenda.com.cn

Tel:+86-755-2765 7098

Fax:+86-755-2765 7178